

# OPERATING INSTRUCTIONS



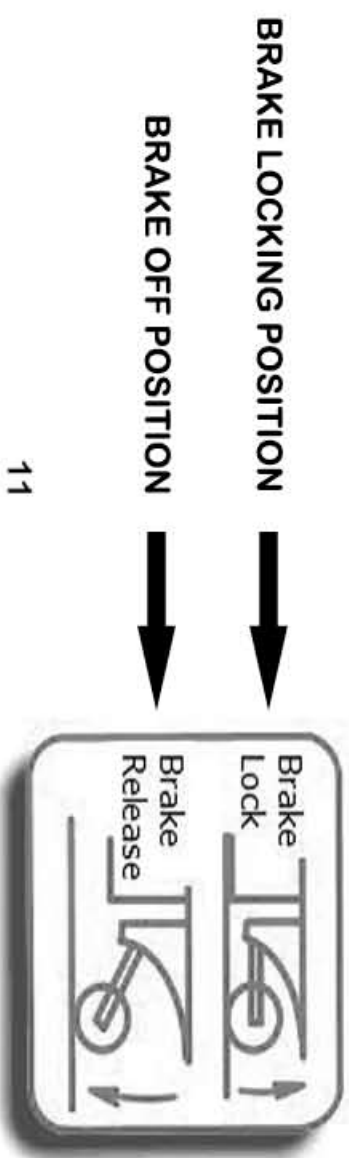
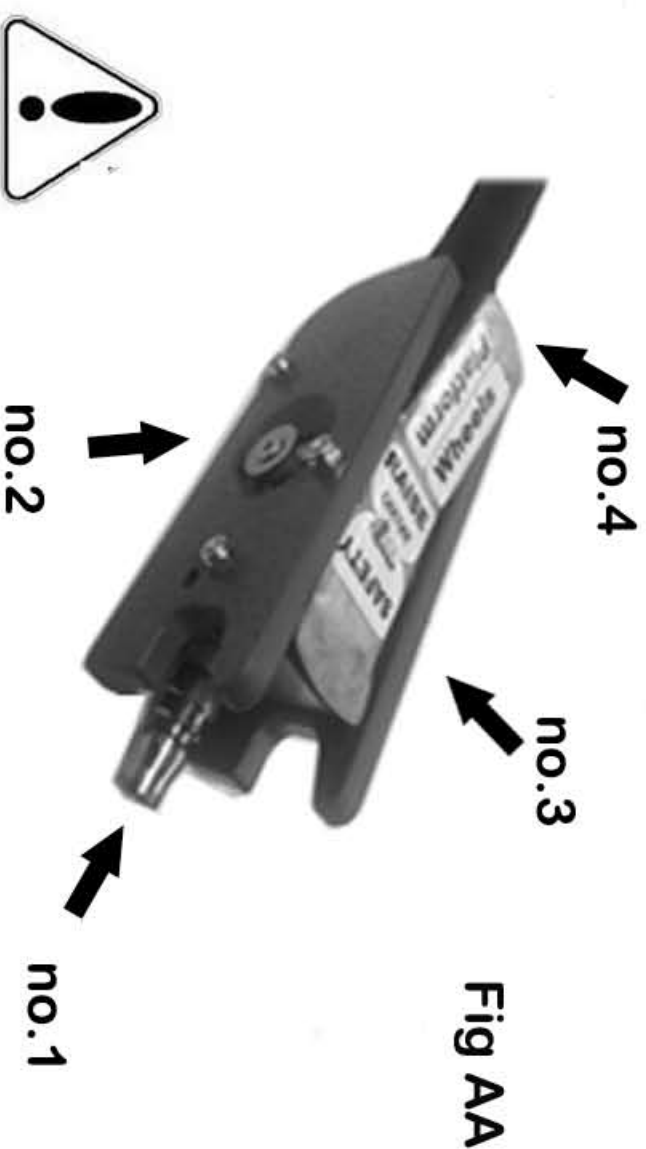
## BRAKE LOCKING POSITION:

Brake Locking Position is when the wheels are off the ground, no longer carrying weight and the Steel Blue Base of the Cartar FL is sitting on the Concrete. In this position, your Car FL is Stationary, and at its safest.

- 1) Make sure your hands, fingers and feet are well clear of the Cartar FL.
- 2) Connect Air Line to Control Pad. (Fig A, no.1)
- 3) On Control Pad, switch to "Platform" (Fig A, no.2)
- 4) Blue Base will now lower and sit on concrete.

## BRAKE OFF POSITION:

- 1) Connect Air Line to Control Pad. (Fig A, no.1)
  - 2) On Control Pad, switch to "Wheels". (Fig A, no.3)
  - 3) On Control Pad, push the "RAISE" trigger. (Fig A, no.4)
- BE AWARE THAT YOUR CARTAR FL COULD START TO ROLL.
- 4) Your Cartar FL is now Mobile. You need to be aware that your Cartar FL is dangerous and requires your TOTAL attention.



11

# OPERATING INSTRUCTIONS

## TO LOWER VEHICLE :

- 1) Connect Air Line to Control Pad. (no.3)
- 2) Reconnect Tow Hook whilst you have access under vehicle (page 9)
- 3) Lower Base to Brake Locking Position (see page 10) before proceeding to Lower Vehicle (top yellow platform)
- 4) Check all persons and objects are clear for a 3 (Three) metre radius.
- 5) On Control Pad switch to Platform.
- 6) On Control Pad, push "Raise" Trigger (no.2) to raise Platform approx 25mm This will allow you to retract the Safety Latch.
- 7) Release "Raise" and now push "Safety" (no.1) on Trigger.
- 8) While holding Safety Trigger (no.1), move switch to Wheels. (no.5)
- 9) Vehicle and Yellow Platform will start descending.
- 10) In the event of an Emergency or the need to stop your vehicle and Yellow Platform from descending any further, release Safety Trigger (no.1) and yellow platform will stop at the next Safety Latch.
- 11) To recommence descent of your vehicle, repeat steps 4, 5, 6, 7 until your yellow platform is totally lowered and vehicle is sitting on its own wheels.
- 12) Remove all Rubber blocks and Block supports and return the 2 Swing Arms and the 2 Slide Arms to there "ON-BOARD" Position.
- 13) Release Cartar FL from "BRAKE LOCKING" position sufficient to pull out from under vehicle. (see page 10)

## CONTROL PAD

- 1/ Safety Release
- 2/ Raise Trigger
- 3/ Air Connection
- 4/ Switch - Raise Platform /Lower Wheels
- 5/ Switch-Raise Wheels/Lower Platform



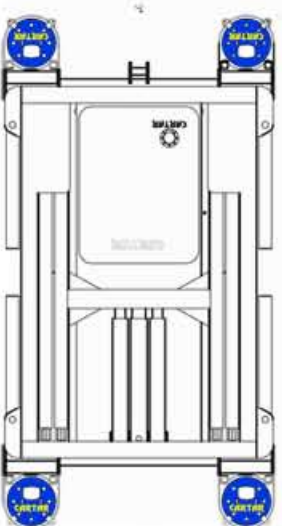
12



## POSITION UNDER VEHICLE

**YOU MUST ENTER THE CARTAR FL FROM FRONT OR REAR OF VEHICLE**

Tow Handle can be removed once vehicle is elevated. To move Cartar Lift once elevated, always use 2 workman . One to steer lift and one to push off vehicle. Never move elevated vehicle by pulling or pushing off Tow handle. See page 9.



Position your vehicle central to your Lift. Make certain that the weight is evenly balanced on the Cartar FL before ascending.

### **WHEEL DIRECTION LOCK:**



The Steering Locks are designed to assist the operator in the steering and control of the Cartar FL. With 4 wheels released, the Cartar FL can turn 360 degrees on its own axis. Front steering locks are available. Tools to lock and unlock require a 13mm / 1/2 inch open ended spanner and allen key.

## POSITION OF RUBBER PADS

Pay close attention to the position of your Rubber Pads by means of the combination of the 2 Swing and 2 Slide Arms, along with the Block support brackets, 99% of all domestic vehicles should be accommodated. Because of the profile of the Cartar Rubber Pad: only these are recommended for the Cartar FL Lift.

## MAINTANANCE OF YOUR MACHINE



- 1) Inspect your machine on a weekly basis. This is especially important with air lines and Hydraulic Hoses. If there is any sign of damage or oil leaks, immediately replace damaged parts before using Cartar lift again.
- 2) It is vital that you oil the air motor weekly with only "Air Tool" Oil. This will help keep your air motor in top condition and protect from compressor impurities. Simply place 2 drops of oil in to the air line. (see Fig 1).
- 3) Replace worn or missing Rubber Pads with genuine Cartar Pads.
- 4) Because your machine has no electrical components, it is recommended that you high pressure clean your machine on a regular basis to prevent heavy build up of industrial grime.
- 5) Drain and replace your hydraulic oil from the oil tank every 18 months. Only do this when your machine is totally lowered and has no load on board. Replacement is 5 litres of Hydraulic Oil grade 46.
- 6) Your machine should never descend with a vehicle on board at a faster rate than when ascending. If this does occur, immediately off load your vehicle and inspect machine. Only when the problem has been identified and fixed, should you use your Cartar FL Lift again.
- 7) Your Cartar Mobile has approx 7 feet or 12mm Pitch Leaf Chain. To lubricate the chain, apply oil from an oil can in areas where the chains are visible front and rear. Repeat every 6 months.
- 8) You should have many years trouble free out of your chain system. Because there is no adjuster between your chains, when you start to notice your 4 wheels are no longer in sync, it will be time to replace your present chain.

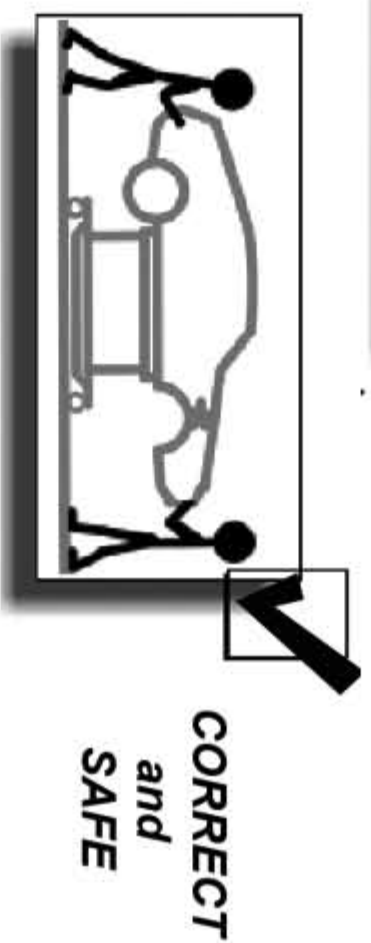


Fig 1



**AIR LINE FITTING**

## USING YOUR TOW HANDLE

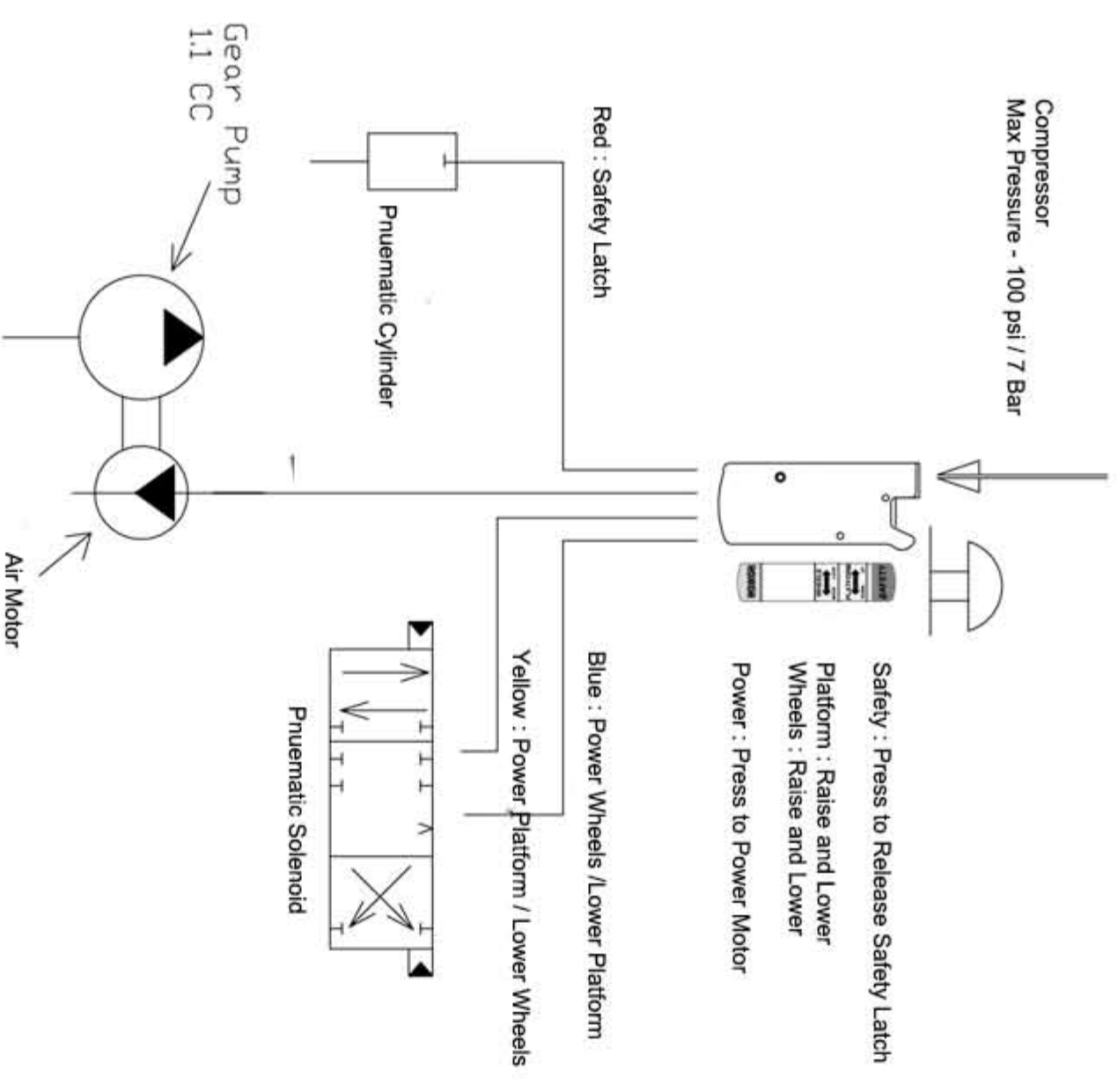


Tow Hook mount

Tow Hook in position



## PNEUMATIC SCHEMATICS



**CARTAR** UP & MOVE  
mobile hoist technology

the Cartar C100 Econo Lift

lifts Higher   
sits Lower 

**CARTAR** UP & MOVE  
mobile hoist technology

the Cartar C100 Econo Lift

lifts Higher   
sits Lower 



# SAFETY PRECAUTIONS FOR THE USER



## USE COMMON SENCE AND PLENTY OF IT



- 24/ Never work on vehicles on your Lift unless your Lift is in the “Brake Locking” position.
- 25/ Always move your Lift at the slowest possible speed when moving with a vehicle on board. (see page 7)
- 26/ Always make sure that feet are well clear of Lift when lowering to “Brake Locking” position.
- 27/ All spare parts and additional copies are available from your distributor or online at [www.cartar.com.au](http://www.cartar.com.au)

TIME



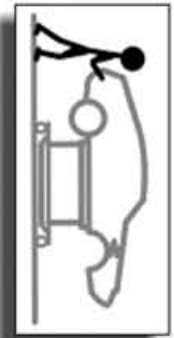
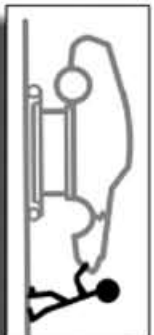
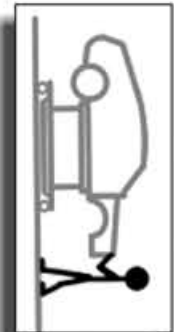
MONEY



HEALTH



Solution:



FACT 1: “Injuries reported whilst working under, or in the moving of damaged vehicles are increasing annually”

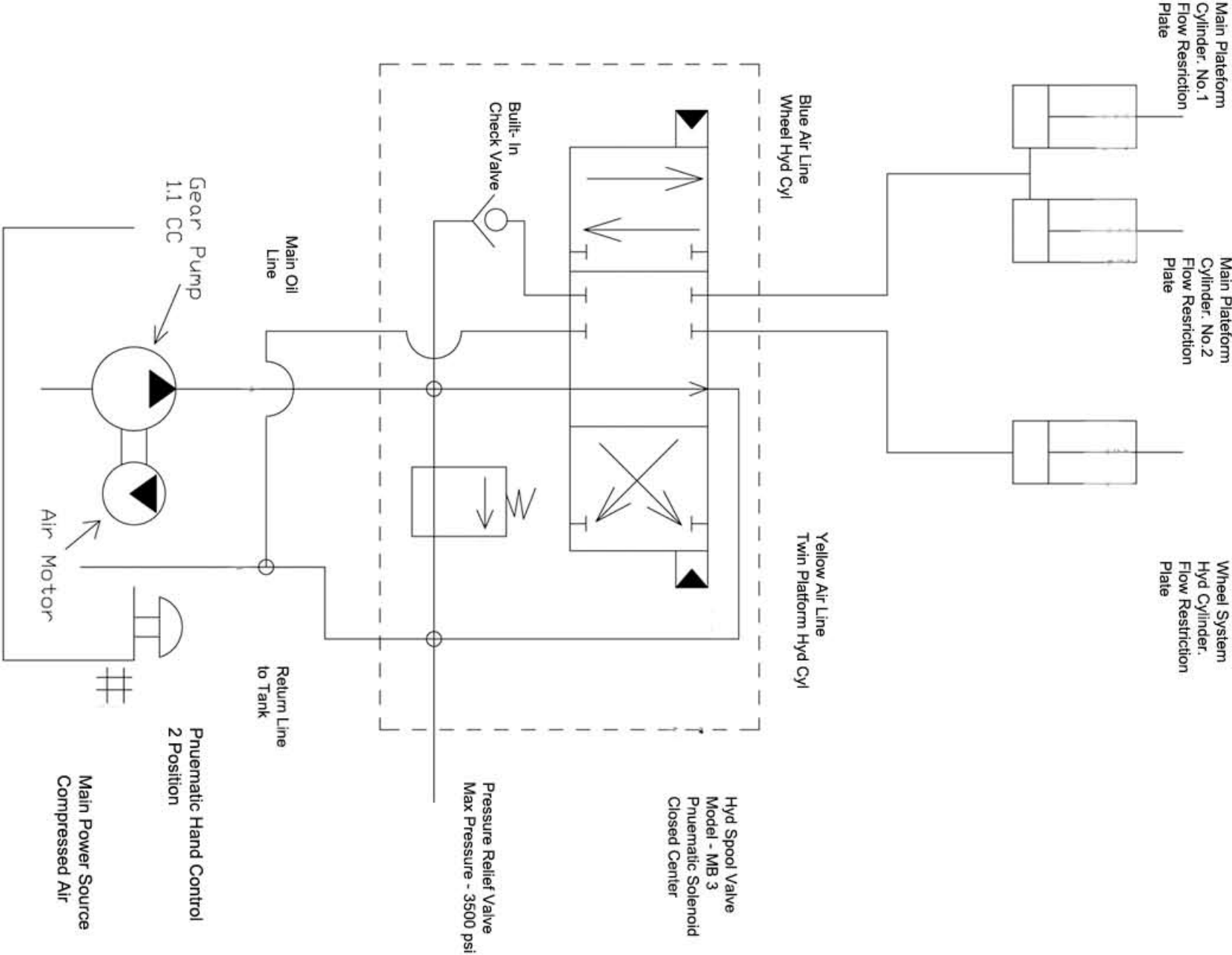
FACT 2: “Any tradesperson that is required to either lay or kneel on cold concrete for longer than 20 minutes may sustain irreparable physical injuries”

(World Health Report 2004)

## UNPACKING & INITIAL ASSEMBLY

- 1/ Place your Cartar Lift on a clean, flat and level floor.
- 2/ Remove Plastic Bag and Strapping from your Cartar Lift and dispose of all rubbish.
- 3/ Inspect your Cartar Lift for any transit damage or oil leaks before proceeding any further. If there are any concerns, contact your seller or Cartar Australia direct. Extra copies of this manual are available online and can be downloaded at [www.cartar.com.au](http://www.cartar.com.au) and then click the link to “Literature”.
- 4/ Inspect Oil Tank Breather for damage or blockage.

# Hydraulic Schematics



## ABOUT THIS MANUAL

The information contained in this manual has been prepared to assist you in the safe operation, the routine maintenance and the general care of your Cartar FL Lift.

By following these guidelines you may look forward to years of reliable service from your Cartar FL Lift.

In this manual, "Cartar FL Lift" refers to the specific Cartar Product that is identified in your warranty Registration Form. Information is denoted and categorized by the following symbols and phrases:



### **SAFETY FIRST**

Identifies general Safety practices



### **DANGER**

An instruction, which if NOT followed, could result in serious or fatal injury



### **WARNING**

An instruction, which if NOT followed, could result in personal injury



### **CAUTION**

An instruction, which if NOT followed, could Damage machine components

Although the reading of information contained in this manual does NOT eliminate the risk involved in operating this machine, your understanding will promote the correct and safe use of this machine.



This symbol means **ALERT**, which indicates that a message involves personal safety. Death, personal injury and/or property damage may occur unless instructions are followed carefully



You are Not ready to operate this Cartar Lift if you have not read and understood the following safety items. Read and understand this entire Operators Manual and the instructions involved with this piece of equipment

### **SAFETY FIRST**



### **Read this section before use!**

Because of its application, this Cartar FL Lift is potentially dangerous. Careless or improper use may result in serious or even fatal injuries. It is important that you read and understand the contents of this manual and that you only allow mature, adult individuals to operate this machine. It is your responsibility to ensure that any individual who operates this machine has also read and understands this manual. To use this machine in a manner that is not intended may result in serious or even fatal injury and/or damage to this machine.

## The WARRANTY REGISTRATION FORM

### **CARTAR'S COPY**

CUT

Purchasers Name: .....

Company Name: .....

Address: .....

Date of Purchase: .....

Serial No. ....

CUT

Retailers Name: .....

Retailers Address: .....

Purchasers Signature: .....

Retailers Signature: .....

CUT

## INTRODUCTION

Dear Valued Customer,

*Congratulations! You are the proud owner of one of the most innovative and relevant products available today for the new generation of modern workshops. Your Cartar Mobile Lift, when used to its full potential will:*

- 1/ offer the “safe movement of damaged vehicles around a workshop” and*
- 2/ offer the tradesperson a “comfortable working environment”.*

*Properly maintained, your Cartar Product will give years of reliable service and a more than generous return on your investment.*

*Your Cartar Product is the result of years of major research and development that is now proudly protected by a series of Patents that are around the globe.*

*This Cartar Product is a superbly crafted machine that utilizes leading edge design, technology and componentry. This ensures ease of operation, maintenance, and most importantly, YOUR safety.*

**Bill Carter,  
Managing Director,  
Cartar Australia.**

## The WARRANTY REGISTRATION FORM

### **PURCHASER'S COPY**

Purchasers Name: .....

Company Name: .....

Address: .....  
.....

Date of Purchase: .....

Serial No. ....

Retailers Name: .....

Retailers Address: .....

.....  
Purchasers Signature: .....

Retails Signature: .....