



Operating Manual and Test Record for Service Lift

Machine Type	Model Name	Serial No.
Cartar Mobile Lift	Glidemaster Mobile	
Cartar WorkBay Lift	Econo 100	

2021 Glidemaster and Econo 100



Cartar Industries
9A Dalkeith Drv
Dromana 3936
Victoria , Australia

tel: +61 3 59 87 1514
email : info@cartar.com.au
web: www.cartar.com.au



**USE COMMON SENSE & PLENTY OF IT**

- 1/ Do Not allow any person to operate this machine without first reading and understanding the safety precautions and operating instructions.
- 2/ Never allow Children or minors to operate this machine.
- 3/ Always operate this machine in well-lit areas
- 4/ Never operate this machine when fatigued. Always be alert. If you become tired while operating this machine, then render your machine safe and take a break. If you have a mental or physical condition that may be aggravated by strenuous work, consult your Physician before you operate this machine.
- 5/ Never operate this machine under the influence of medication, alcohol, or drugs.
- 6/ Always keep your hands, feet and body away from moving parts.
- 7/ Always inspect this machine and make sure it is in top working condition prior to using.
- 8/ Always keep this machine in “Brake Lock “position when not being moved.
- 9/ Never exceed the maximum load of 2800 kg / 6,6160 lbs of weight.
- 10/ Never enter the inner frame of this machine when elevated.
- 11/ Always keep your load as low to the ground as possible when moving machine Horizontally.
- 12/ Always maintain Hydraulic fluid levels at recommended levels.
- 13/ Never apply external forces to vehicles on this machine.
- 14/ Always make sure that the floor surface is clean and level before moving your machine horizontally.
- 15/ Always make sure that your rubber pads are correctly positioned before placing a load on them.
- 16/ Never lower or raise your machine without your Hydraulic rams fitted and Operational.
- 17/ Never raise or lower your machine without your Safety system fitted and Operational.
- 18/ Always keep power leads well away from your moving machine.
- 19/ Always make sure that your load is secure, and your weight is evenly distributed Onboard your machine before elevating.
- 20/ Never connect or feed an air source that EXCEEDS 100 psi / 7 Bar.
- 21/ Never Raise or Lower your machine unless you have a perimeter ground clear –
ance of at least 3 (Three) meters.
- 22/ Never place your feet, hands or person under your machine unless vehicle is Secured and supported by approved axle stands at all 4 corners.
- 23/ Always respond immediately and remove load from your machine if there is any Sign of a worn or faulty part.
- 24/ Always replace worn or faulty parts with Genuine Cartar Parts
- 25/ Never work on vehicles on your lift unless your Lift is in “Brake Lock “position.

USE COMMON SENSE & PLENTY OF IT



26/ Always move your lift at the slowest possible speed when moving
With a vehicle on board. (see page 7).



27/ Always make sure that feet are well clear of the lift when lowering
Into “Brake Lock “position.

28/ All spares and copies of this manual are available from your
distributor or online at www.cartar.com.au.

TABLE OF CONTENTS

1	Safety Precautions for user	2
1	Operation and Safety Inspection	5
2	General Information	6
2.1	Hazard Warnings	6
2.2	Limitation of Liability	6
2.3	Copyright	7
2.4	Terms of Guarantee	7
2.5	Customer Service	7
3	Master Data Sheet	8
4	Product Description	9
4.1	Intended Use	9
4.2	Product Structure	10
4.3	Technical Data	11
4.4	Product Designation	11
5	EC Declaration of Conformity	12
6	General Safety Instructions	13
6.1	Operators Duty of Care	13
6.2	Operators Duties	13
6.3	Basic Safety Requirements	14
6.4	Requirements of Operating Personnel	15
7	Transport and Preparation	16
7.1	Transport Inspection	16
7.2	Disposal of the Packaging Material	16
8	Installation and Assembly	17
8.1	Environmental Conditions for Assembly	17
8.2	Assembly Instructions Glidemaster Mobile	18
8.3	Assembly Instructions Econo 100	18
8.3	Knowing this Manual	18

9	Operation	19
9.1	Use of Tow Handle	19
9.2	Cartar Legend	19
9.3	Hand Control Identification	19
9.4	Position Under Vehicle	20
9.5	Wheel Directional Locks	21
9.6	Operation of Rubber Pads	22
9.7	Brake Lock Operation	23
9.8	To Lower Vehicle	24
9.9	Hand Control Operation	24
10.0	To Raise Vehicle	25
10.1	Safety Inspection	26
10.2	Regular Safety Checks	27
11.1	Maintenance	28
11.2	Pneumatic Schematics	29
11.3	Hydraulic Schematics	30
11.4	Hydraulic Cartridge Valves	31
11.5	Spare Parts Listing	32
11.6	Troubleshooting	33
11.7	Overcoming Air – Motor “ Blow By “	34
11.8	Understanding the Safety Lock Valve	34
12	Additional Information	35
12.1	General Specifications	35
12.2	Notice regarding the sliding Area of the Scissor Arms	35
12.3	Working on a Lifted Vehicle	35
12.4	Cartar Warranty	36

1 Operation and Safety Inspection

Carried out by the Manufacturer to check the following details:

Following ID Plates and Parts are Present:

- Nameplate
- Operating Instructions (Quick Setup)
- Lifting Capacity
- Bar Mains Pressure
- Raise “ UP “ & Lower “ Down “
- Cartar Logo
- CE Logo
- Warning Labels
- Serial Number
- 4 x SUV Brackets
- 4 x Rubber Pads
- 1 x Tow Handle

Operation and Safety Checked:

- Pressure Relief Valve set at 3.5 bar Operating Pressure

Final Inspection:

- 1000kg function Test – Raise and Lower
- Safety Lock Function
- Hand Control Function
- WES Function
- Scissor Arm Roller Function
- Condition of Pneumatic Lines (in proper position and NO leaks)
- Swing Arm Function
- Inspect Hoses and Oil Tank for Oil Leaks
- Spray Clean total Machine

Serial No.

Date

Name

CARTAR INDUSTRIES
9A Dalkeith Drv
Dromana , Vic 3936
AUSTRALIA
Tel : +61 3 59 87 1514
Email : info@cartar.com.au

2 General Information

The operating instructions (and Test Logbook) contain important information concerning the installation and ensure safe, proper, and economical operation as well as preservation of operational safety.

Observance of these operating instructions will help you to avoid danger, reduce repair costs and downtime as well as to increase the life of your Cartar Lift.

As evidence of regular **Safety Checks**, this Logbook contains a form. This should be used to provide documented details of Tests. (It is advisable to make a copy of the form before starting to fill it out)

Installation and testing

Safety-related work and safety inspections may only be performed by suitably trained personnel. In this documentation, personnel are designated as expert and qualified persons.

2.1 Hazard Warnings

To identify hazardous areas and important information, the following symbols with the described definitions are used. Please pay special attention to text sections marked with these symbols.



Signifies danger to life and limb, meaning improper execution of the process referred to by the symbol could have fatal consequences!



Signifies a notification of a key function or an important notice!

2.2 Limitation of Liability

All details and indications in this operating Manual were compiled taking into account the relevant standards and regulations, and the latest technology as well as many years of insight and experience. Therefore, the manufacturer accepts no liability for any damage caused by:

- Failure to adhere to the operating manual.
- Improper use
- The intervention of Non-Qualified staff
- Arbitrary alterations
- Neglecting Maintenance

2.3 Copyright

These Operating Instructions are to be treated as confidential and are solely intended for personnel working with the machinery. Transfer of the operating manual to third parties without the written consent of the manufacturer is prohibited.



Text, drawings, images, and other illustrations are copyrighted and intellectual. Property rights apply. This includes the use of the name Cartar or Glidemaster.

2.4 Terms of Guarantee

The terms of guarantee are included as a separate document in the sales brochures.

2.5 Customer Service

For technical information, please contact our customer service centre as follows:

Customer
Support

CARTAR INDUSTRIES
9A Dalkeith Drive
Dromana , 3936
Victoria , Australia
Tel : + 61 3 59 87 1514
Email : info@cartar.com.au
Web : www.cartar.com.au

3 Master data Sheet

Model Name:

Serial No:

Manufacturer: CARTAR INDUSTRIES
9A Dalkeith Drive
Dromana , 3936
Victoria , Australia
Tel : +61 3 59 87 1514
Email : info@cartar.com.au
Web : www.cartar.com.au

Intended Use:

The Lift with Hydraulics and Scissor system is a lifting machine for lifting vehicles with a permissible load capacity (see technical data) of a maximum load distribution of 3:2 in the driving direction or 2:3 against the driving direction.



Any construction related modifications as well as basic repairs are to be recorded on this master sheet!

Changes to the construction, testing by experts, re- commissioning.
(Date, type of change, experts' signature)

.....
Name and contact details of Assessor

.....
Location, date, signature

4 Product Description:

4.1 Intended Use

The Lift is exclusively intended for lifting vehicles (passenger cars) with a maximum nominal load. (see **chapter of Technical data**)

Lifting individuals and other objects is prohibited.

Working under a lifted vehicle and during the lifting and lowering movement is not permitted.

Operations may only be performed by persons who have read and understood the operations manual and who are more than 18 years of age.

Vehicles may only be lifted at the designated lifting points (on the framework or at jacking points). It is only allowed to lift vehicles as stated in the operating instructions.

The products described in these operating instructions can be used in explosion hazardous areas and are subject to the Directive 94/9/EC. Steps to protect against explosion hazards are required. See Chapter “general **safety information** “and Chapter “**Installation** “for further information.



The marking of the equipment is Ex 11 3G c 11A T4.

The lifting platform is part of the machinery group 11, category 3; used in general industrial Area 2. for gases of explosion group 11A.

C= Constructional Safety

T4 = up to 135 degrees C surface temperature

Version as a category 2 is available on request.

The scope of intended use also includes the reading of the current operating manual as well as compliance with all the indications included in the same – particularly relevant safety instructions.

The scope also extends to ensuring that all inspection and maintenance operations are implemented within the prescribed time periods.

If the vehicle lift system is not used according to its intended use, safe operation of the system cannot be guaranteed.

In the event of any accident resulting in personnel injury or damage to property resulting from improper use, the operator of the lifting system shall be responsible and not the Manufacturer!

4.2 Product Structure

The vehicle lift consists of a Hydraulically operated platform main body on one hand and of a cantilever set on the other hand lifting the vehicle directly its underframe.

The Twin Hydraulic Cylinders perform a movement that is carried out laterally by the scissors. The scissors also restrict the lift height of the service lift. A safety valve system prevents the service lift from descending in the event of a Hydraulic failure.

The power source that drives the Hydraulic System is a Pneumatic Motor and compressed air.

The functionality of the motor and safety system is all powered by compressed air.

Technical data about the service lift is available in the chapter “**Technical Data**”.

You will find reference to professional assembly in the chapter “**Mounting**”.



CARTAR ECONO 100
Work Bay Lift



CARTAR GLIDEMASTER
MOBILE “Lift & Move “

Technical Data

Technical changes reserved	GLIDEMASTER	ECONO 100
Lifting Capacity of Lift	2800 kg/ 6210 lbs	2800 kg/ 6210 lbs
Empty weight of Lift	280 kg/ 620 lbs	265 kg / 584 lbs
Maximum load distribution	3:2 in driving direction	3:2 in driving direction
Lift time of Lift	48 seconds	48 seconds
Descent time of Lift	40 seconds	40 seconds
Effective stroke of Lift	820 mm /32.5 "	780 mm / 30.7"
Height gain with SUV's	180 mm / 7"	180 mm / 7"
Minimum ground height	105 mm/ 4.1"	100 mm / 3.9"
Length of Lift	2010 mm / 79.1"	1520 mm / 59.8"
Width of Lift	1060 mm /41.7"	1030 mm / 40.5"
Max distance Arm Width	2000 mm / 78.7"	2000 mm/ 79.1 "
Max Distance arm Length	2000 mm / 79.1 "	2000 mm / 79.1 "
Hydraulic Gear Pump	.5 cc	.5 cc
Hydraulic Operating Press	3500 psi	3500 psi
Required Air Pressure	60 -100 psi	60 – 100 psi
Noise Pollution	< 78 dB	< 78 dB
Dimension Sheet	Page 35	Page 35
Pneumatic Schematics	Page 29	Page 35
Hydraulic Schematics	Page 30	Page 30
Safety Cartridge Valve	LMP-08-L Keta	LMP-08-L Keta
Manifold Cartridge Valve	LMP-08-4-L Keta	LMP-08-4-L Keta
Safety Power source	Pneumatic	Pneumatic
Hyd Cylinder Flow Control	Yes- Twin per Cylinder	Yes – Twin per Cylinder
Anti Drop Safety Device	YES	YES

4.3 Product Designation

The details of the Lifting Platform are stated on the type of shield on the machine frame as well as in the EC Declaration of Conformity. Plate is located on rear of Oil Tank.

Details on Nameplate

Machine Type		Year of Construction	
Serial No.		CE Approval	
Lift Capacity		Operating Pressure	

5 EC Declaration of Conformity

Set out in Annex 11 A of the EC Machinery Directive (2006/42/EC)

The manufacturer	Cartar Industries 9A Dalkeith Drive Dromana, Vic, 3936 Australia	
	CARTAR INDUSTRIES PTY LTD	
Is responsible for all Documentation and declares that the following machine. Is accurately Described	Machine Type: Glidemaster Mobile Econo 100	serial no. see cover sheet. see cover sheet.
Complies with the Health and Safety requirements of the following EC Directives:	Machinery Directives 2006/42/EG Directive: EN 1493: 2010 Directive: EN ISO 4413 :2010	

Applicable Harmonised Standards

EN 1493 : 2010	Vehicle Lifting Platform. Hydraulic Fluid Power
EN ISO 4413:2010	General rules and Safety Requirements for Systems.

Compliant with AUSTRALIAN STANDARDS: AS 1418.9 - 1996

Any construction- related modifications, which affect the technical data specified in the operating instructions and thus significantly alter the intended use of this machine, shall render this declaration of conformity as Null and Void!

Bill Carter
Managing Director
Cartar Industries -2020



6 General Safety Instructions

6.1 Operator's Duty of Care

The Lifting platform was designed and built taking a hazard assessment into account and following careful selection of the harmonised standards to be met, as well as additional technical specifications. It thus corresponds to the state of the art and guarantees the utmost level in safety.

However, this safety level can only be reached during practical operation, when all measures required have been implemented. The due diligence is required on the part of the operator of the lifting platform, to plan these measures and ensure their implementation.

The Operator must, in particular, ensure that:

- The lifting platform is only used as intended (see chapter **Product description**)
- The service lift only be used in a fully functional and fault free state and will be checked regularly for operational functionality with special attention to safety equipment.
- The placement of the service Lift is located and designed so that the operator can observe all movements of the load as well as have an overview of the area under the lift and its load. The operator is responsible for supplying adequate Lighting.
- Access to the danger area (area under the lifting platform and under the load) by individuals is forbidden. Operations in the danger area are prohibited. Maintenance operations are excluded. (see chapter on **Maintenance**)
- The operating instructions are to remain fully readable and available in the area in which the lifting platform is used.
- The lifting platform is only to be used by individuals having read and understood the operating instructions.
- Personnel are to be regularly instructed of all relevant information regarding work safety and environmental protection and familiar with the operating instructions and the safety notices therein.
- Only qualified individuals and experts may repair the lifting platform.
- None of the safety and warning notices linked to the lifting platform are to be removed and must remain readable.
- No interference with the service lift (for example repairs) should take place without adhering adequately to protective measures. (e.g., support the top platform when removing the hydraulic cylinders)

6.2 Operator's Duties

The operating safety ordinances are intended for the operators of work equipment used in vulnerable areas.

The operator must take a risk assessment of the area where the Service Lift will be used. The dangers that arise during the use of the work equipment related to the substances and working environment should be detected and taken into account.

The operator shall take the measures necessary and choose operating equipment suitable for the conditions prevailing at the workplace and assure the safety and health of employees.

For the execution of risk assessment and decision on suitable equipment, the operator must apply country specific guidelines and standards.

6.3 Basic Safety Measures



When operating this service lift. The statutory accident prevention regulations in accordance with BGV A1 apply. Regulations BGR 500 (operators of work equipment) can be used for information purposes.



Make sure that the front wheels are in the straight-ahead position. Before lifting, Prevent the vehicle from rolling away. Pull the Hand brake and shift the car into Reverse or first gear. If an automatic, shift the car into P position.



The operator is to monitor the vehicle during lowering or lifting.



Service Lift parts such as Hydraulic hoses and cylinders must be protected whilst. Working with high temperatures (welding, grinding etc.) and from mechanical And chemical damage. Strong degreasers can do damage.

Compliance with the following points is particularly emphasised:

- The Cartar Lift is only to be used for passenger cars.
- The total weight of the lifted car may not exceed the stipulated lifting capacity, whereby a maximum load distribution of 3:2 in the driving direction or 2:3 against the driving direction.
- Whilst operating the Cartar Lift, instructions in the operating manual are to be complied with.
- Only persons who are 18 years old or older and instructed in the use of the Cartar lift are permitted to use it.
- During lifting and lowering movements, no person other than the operator may stand in the way of the area of movement for loading and Cartar Lift.
- The transport of passengers on the Cartar Lift or in the car being lifted is prohibited.
- Climbing on the Cartar Lift or in the car being lifted is prohibited.
- Following any modifications to the construction and repairs to load-bearing parts, the Cartar Lift must be inspected by an expert. Changes and repairs must be recorded on the master data sheet.
- In the event of modifications (i.e. repairs) appropriate safety measures must be meet.
- Sufficient clearance between low lying vehicle parts and the Cartar Lift should be ensured before lifting begins.
- The rubber blocks must be placed onto the biggest plain space. Stacking is not allowed.



Not complying with safety regulations can cause serious injuries as well as damage to the lifted vehicle.

6.4 Requirements of Operating Personnel

The Lifting platform must only be used by individuals who have been suitably trained, instructed and authorised. These persons must be familiar with the operating manual and proceed in accordance with the same. The respective authorizations of the operating personnel are to be clarified.

Moreover, for the following activities, specific qualifications are required :

Operateration	Execution
Installation	Cartar service technician or technician trained by Cartar
Starting Up	Cartar service technician or technician trained by Cartar
Briefing	Cartar service technician or technician trained by Cartar
Fault Clearance	Cartar service technician or technician trained by Cartar
Servicing	Cartar service technician or technician trained by Cartar
Maintenance	Cartar service technician or technician trained by Cartar
Repairs	Cartar service technician or technician trained by Cartar
Disassembly	Cartar service technician or technician trained by Cartar

Operating individuals in training should only operate the lifting platform when supervised by an experienced person. Evidence of completed and successful training should be confirmed in writing.

All control and safety installations must, generally speaking, only be operated by suitably trained persons.

All individuals engaging in activities involving the lifting platform must read the operating instructions and sign to confirm that they have understood them.

7 Transport and Preparation

7.1 Transport Inspection

Check the order upon receipt of delivery for damages caused during transportation.
If there is identifiable damage, proceed as follows:

- Leave the goods and packaging in an unchanged state. Do not attempt to use the product.
- Immediately contact Cartar customer service:

Customer Service:

Cartar Industries
9A Dalkeith Drive
Dromana , 3936
Victoria , Australia
Tel +61 3 59 87 1514
Email : info@cartar.com.au
Web : www.cartar.com.au



Do not send back damaged goods before receiving confirmation from the customer service centre!

7.2 Disposal of the Packaging materials

The packaging material must be disposed of in accordance with the current environment and disposal guidelines. Cartar is committed to the protection of our planet earth.

8 Installation and Assembly

The following important safety instructions must be observed during the assembly of the Cartar Lift. Adhering to safety instructions helps to avoid injuries, personal damage, as well as damage to machinery.

- The installation work must only be performed by suitable-trained persons and with compliance of the safety instructions during the process.
- Before commencing the installation work, the lifting platform must be investigated for damage in transit.
- Always ensure that only authorized persons enter the workspace and that no other persons are exposed to any risk from the installation work.
- All machinery connections (tubes) are laid out so that there is no risk of stumbling.
- Also read the chapter “General **Safety Instructions** “.

8.1 Environmental conditions for assembly

The Cartar lift is best suited for indoors where there is a degree of protection from the weather.

The ground where the car lift is to be assembled should be horizontal and flat. The load capacity of the floor must be able to support the total weight of the Cartar lift. The operator is solely responsible for the selection of the installation location.

The Cartar Lift must only be used within a temperature range of 5* C to 65* C. During the selection of the assembly location bear in mind the measurements of the Cartar lift that are outlined in the chapter on “**Technical Data** “as well as the chapter on “**Additional Information** “ . (take note of the measurements with a lift vehicle as well)

Adequate ceiling height must be present (at least the total height of the Cartar Lift plus the vehicle height) . Care must be taken that the minimum distances specified are adhered to (according to Country-specific regulations and workplace ordinances) with regard to distance between walls and equipment respectively. It should be noted that the Cartar Lift must not block any emergency escape routes. Adequate lighting must be present at the assembly site (according to country-specific regulations and workplace ordinances).

A compressor air supply of at least 80psi must be available at the Cartar Lift assembly location.



Care must be taken in selecting the assembly location so that the operator has an Unobstructed view of the Cartar Lift and the car being lifted.



Only use dehumidified, non-Lubricated compressed air! A filter regulator must be installed in the mains connection. (air filter and water separator).

8.2 Assembly Instruction: Glidemaster & Econo 100

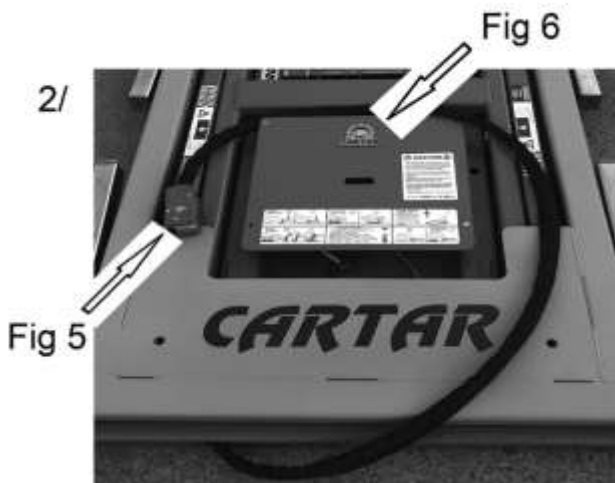
1/



Inspect the packaging and contents for any Damage or oil leaks. Remove the following Items from your lift:

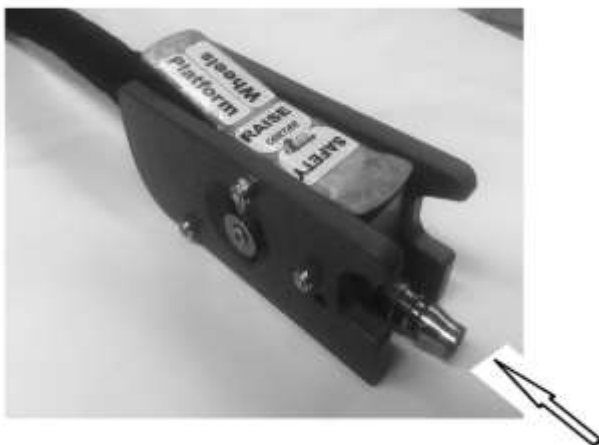
- 1 x Tow Handle
- 4 x SUV Orange Brackets
- 4 x SUV Rubber Pads
- 1 x Quick Set Up Manual

2/



Totally dispose of all wrapping and miscellaneous items. Your Cartar Lift should now be sitting flat on a clean concrete floor. Lay out flat your hand control to inspect for any cuts or damage (fig 5) . Inspect the Oil tank breather for damage or blockage (fig 6)

3/



Thread an Air Connection fitting to your hand control.
Thread is ¼ BSP (fig 7).
Prior to fitting, apply a thread tape or sealant to the thread. Once in place, do not remove as resealing will be difficult.

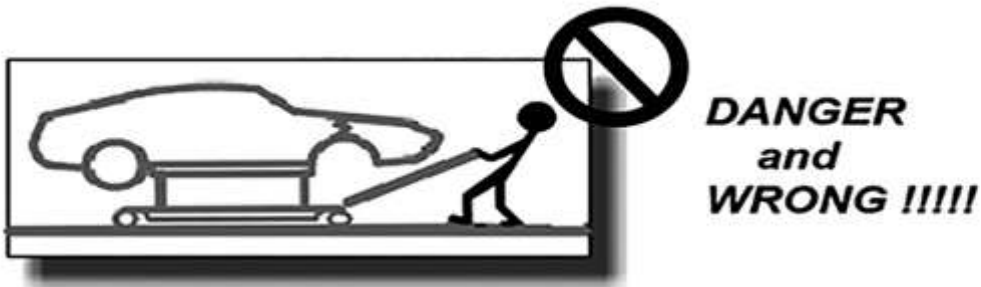
Insert 2 drops of machine oil into your air line fitting prior to connecting your airline. (fig 7) Your Cartar Lift is now ready to commission. It is recommended that you place a load of approximately 300 kg on your lift for your initial lift.

Being new and reliant on gravity for descent, this will free up your product.

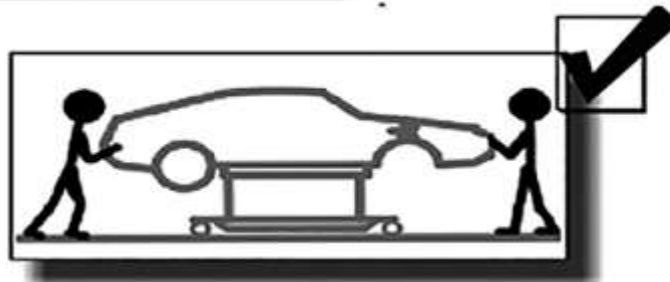
Please have complete knowledge of this manual before proceeding

9 OPERATION

9.1 Correct use of Tow Handle



**DANGER
and
WRONG !!!!!**



**CORRECT
and
SAFE**

Never use your Tow Handle to Pull or Push your Cartar Lift when you have a Vehicle onboard and elevated

The Tow handle can be used at the Front or rear of a Glidemaster (fig 8)

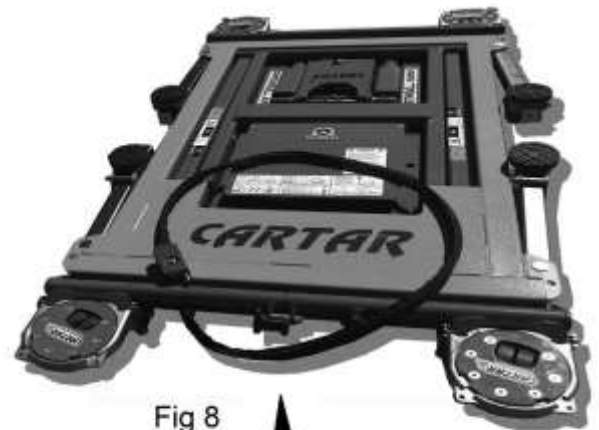


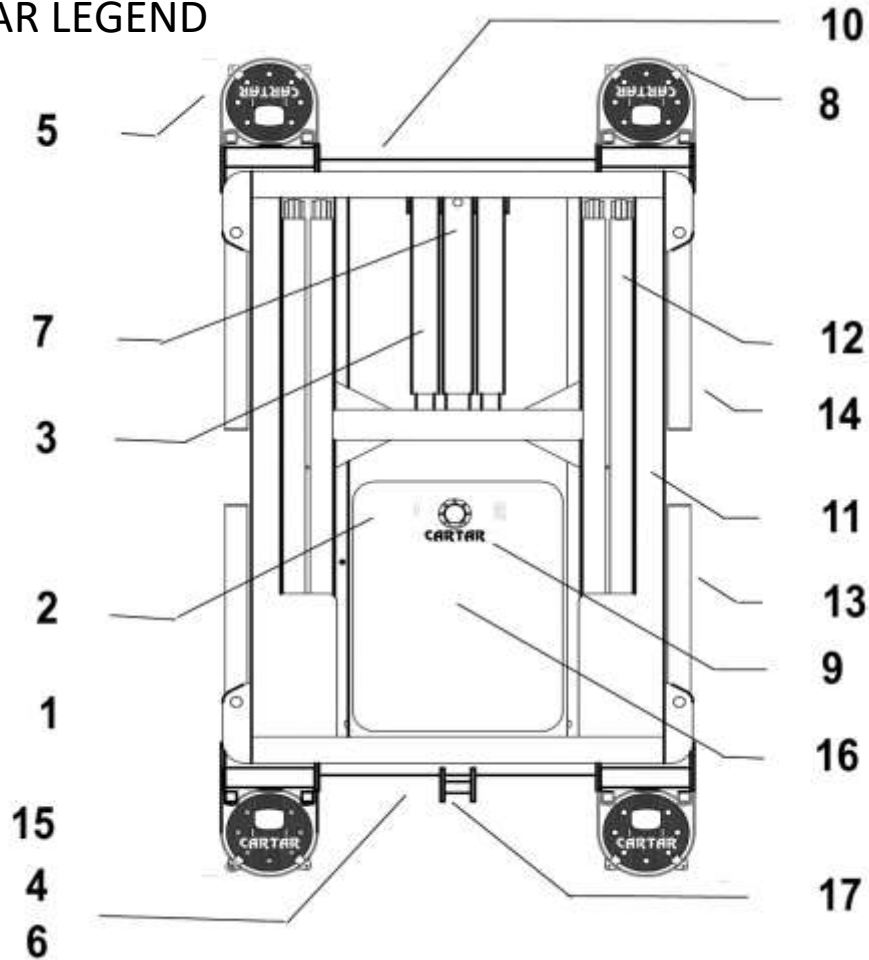
Fig 8



Fig 9

By using the Econo Wheel Kit, your lift can now become Portable. (fig 9)

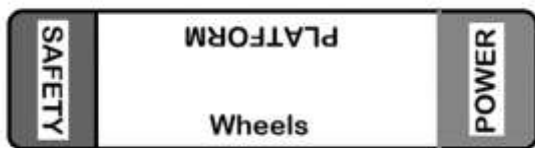
9.2 CARTAR LEGEND



- | | |
|------------------------------|-------------------------|
| 1/ Oil Filler / Breather Cap | 10/ Blue Base Frame |
| 2/ Main Pump Assembly Cover | 11/ Orange Top Platform |
| 3/ Hydraulic Cylinders | 12/ Main Lift Arms |
| 4/ Brake Locking Release | 13/ Front Swing Arms |
| 5/ Wheel Assembly | 14/ Rear Swing Arms |
| 6/ Safety Latch Release | 15/ Control Pad |
| 7/ Safety Lock Assembly | 16/ Air Motor Assembly |
| 8/ Wheel Directional Locks | 17/ Tow Handle Mount |

9.3 HAND CONTROL IDENTIFICATION

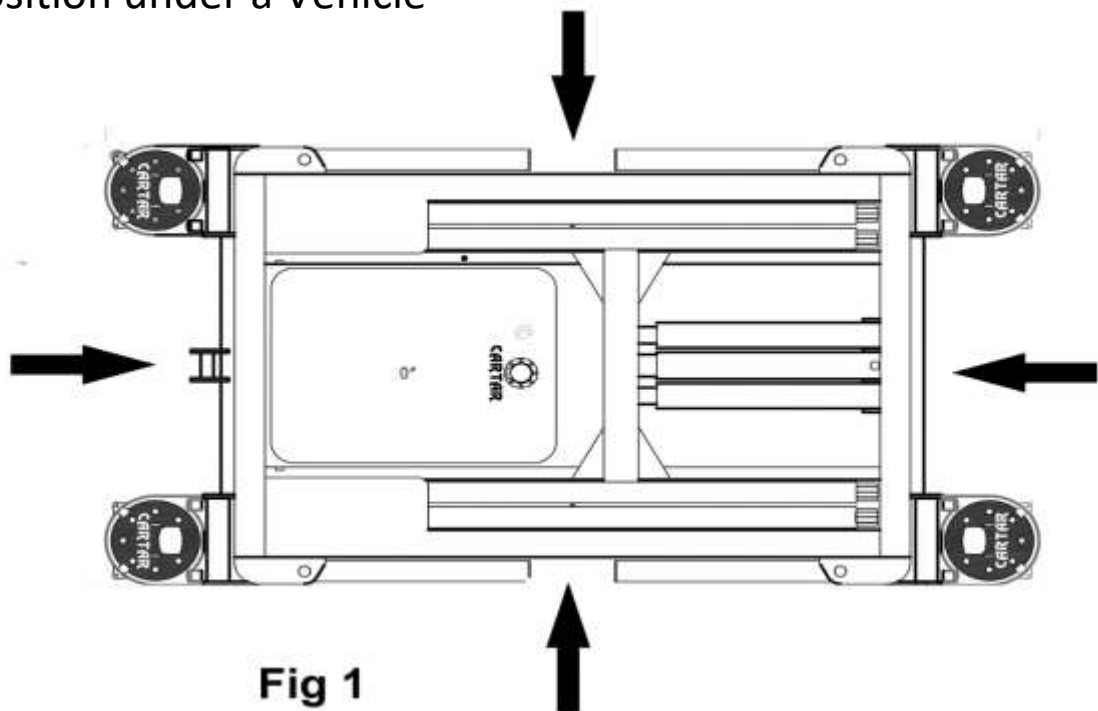
SAFETY – Release the safety Lock.
POWER – Activates the Air Motor



WHEELS – “Slide to Wheels & Press Power “,
Wheels load up & Platform Lowers.

PLATFORM – “Slide to Platform & Press Power “
Wheels retract & Platform Raises.
Glidemaster is now in “**Brake Lock** “position

9.4 Position under a Vehicle



Make sure the weight of your vehicle is evenly balanced across your orange platform. You can position your Cartar Lift from Front to Rear or Side to Side. (fig 1). If your vehicle is not positioned correctly, you can cause injury to the operator and extensive damage to your vehicle.

Once in position, remove your tow handle and store well out of the way. You only use your tow handle to position your Cartar Lift. When moving your Cartar Lift with a vehicle onboard in an Elevated position, always keep your vehicle as lower to the ground as is reasonable. To move your Cartar lift with a vehicle onboard, this can be achieved by pushing on the vehicle.

When Moving your Cartar Lift with an Elevated Car onboard, always use 2 operators. One to push and One to steer and Observe.

9.5 Wheel Directional Locks



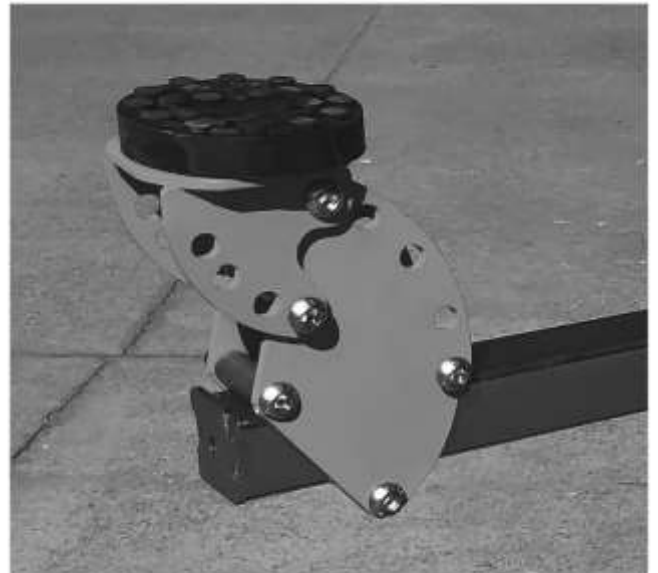
The Wheel Directional Locks are designed to assist the operator in the steering and control of the Cartar Glidemaster Lift. With 4 wheels released, your Glidemaster can turn 360 degrees on its own Axis. Excellent tool for manoeuvring vehicles out of tight spaces. Designed to lock and unlock .

9.6 Operation of Rubber Pads



As an option, Cartar can supply our group 1 block System. Strong and Hardy, they offer an excellent solution to fast time set ups. Height range is 25 mm to 45 mm. Rubber pads are replaceable.

Standard with every Cartar Lift is a set of our unique SUV System. The SUV Kit offers the operator “one bracket for all “. Yes, this can accommodate all vehicles. Height range is 30mm to 160 mm. Rubber pads are replaceable.



The 4 Swing Arms have their own independent locks. To move into place, simple – “Lift & Swing” Once load is applied to each arm, the locks will engage.



9.7 Brake Lock Operation



BRAKE LOCK POSITION →

BRAKE LOCK RELEASE →



Brake-Lock Position is when the wheels of your Glidemaster are off the ground, and no longer carrying any load and the blue base of your Glidemaster is sitting flat on your concrete floor. In this position, your Glidemaster is in its safest format.

- Step 1** Make sure your hands, fingers and feet are well clear of the lift.
- Step 2** Connect airline to your hand control (fig 1)
- Step 3** On Hand Control, move slide to Platform (fig 2)
- Step 4** Blue Base will now lower and sit flat on your concrete floor.

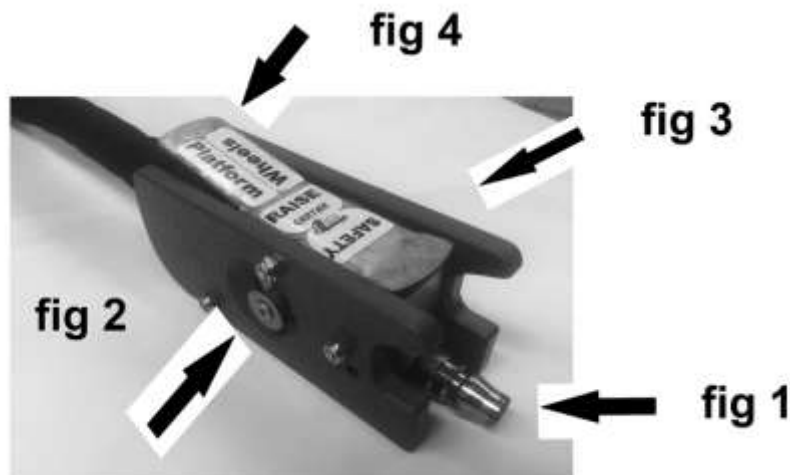
YOU ARE NOW IN BRAKE LOCK POSITION



WARNING – ONCE BRAKE LOCK HAS BEEN RELEASED YOUR VEHICLE COULD START ROLLING.

- Step 1** Connect airline to hand control (fig 1)
- Step 2** On hand control move slide to wheels (fig 3)
- Step 3** On hand control, push RAISE trigger (fig 4)
- Step 4** Your Glidemaster is now mobile.

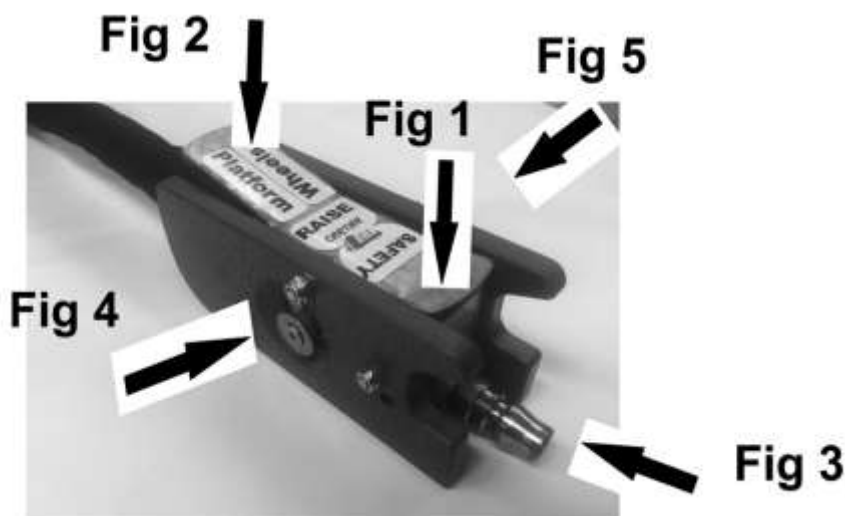
Your GIIDEMASTER NOW REQUIRES YOUR TOTAL ATTENTION



9.8 To Lower Vehicle

- Step 1 Connect airline to hand control (fig3)
Reconnect Tow-Handle to base whilst you have under vehicle access.
- Step 2 Secure your Glidemaster into Brake Lock position before proceeding to lower Vehicle.
- Step 3 Check that all persons and objects are clear of your lift for a perimeter of 3 meters prior to lowering your vehicle.
- Step 4 On hand control move slide to PLATFORM.
- Step 5 Hold down safety.
- Step 6 With safety remaining pressed, now move slide to WHEELS (fig 5)
- Step 7 Vehicle and Orange platform will start to descend.
- Step 8 In the event of an emergency and decent needs to stop immediately, release Pressure from Safety. Vehicle and Orange Platform will immediately stop.
- Step 9 To recommence your decent, repeat steps 4,5,6 and 7 until your vehicle and Orange top has descended, and your vehicle is sitting firmly on own wheels.
- Step 10 Remove your 4 rubber pads from your swing arms and move your swing Arms back to their retracted position.
- Step 11 Activate your Glidemaster wheels. Be advised that you will only need minimal ground clearance to roll your Glidemaster out from under your vehicle.
- Step 12 If your vehicle is extremely low, by using 2 of the Cartar ramps, your Glidemaster will then be able to roll under.

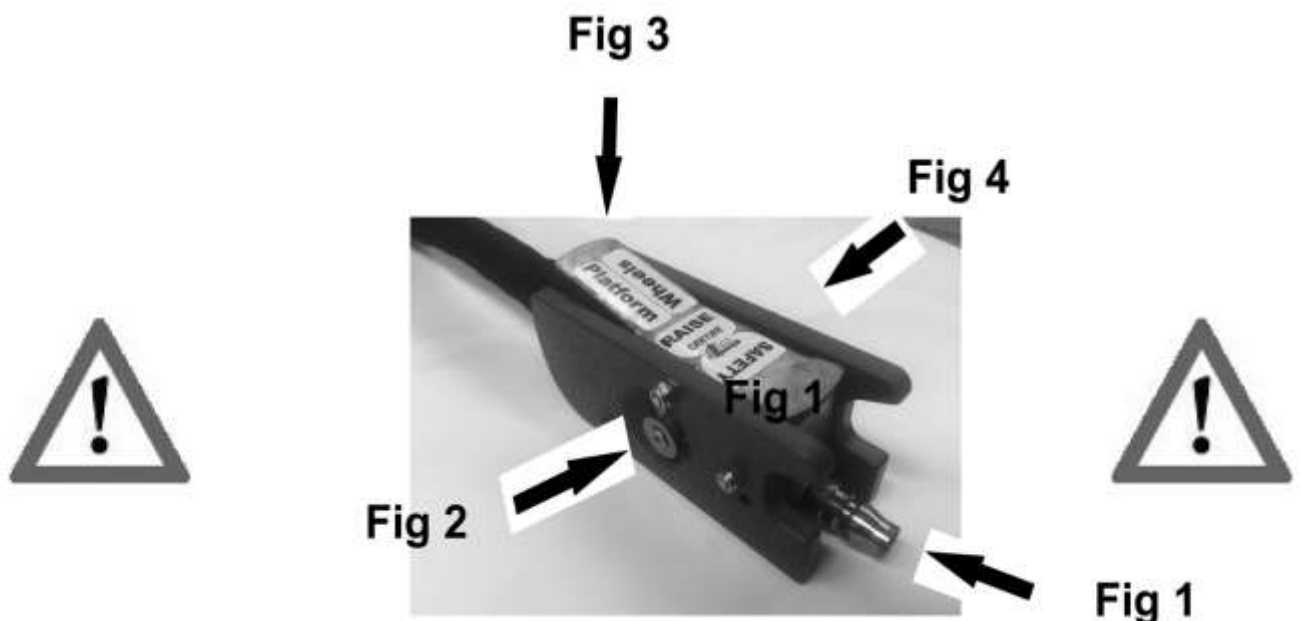
9.9 Hand Control



- 1/ SAFETY RELEASE
- 2/ POWER Trigger
- 3/ Main Air Connection
- 4/ SLIDE – PLATFORM =
Raise Platform / Brake lock Wheels.
- 5/ SLIDE – WHEELS =
Load up Wheels/ Lower Platform

10.0 To Raise a Vehicle

- Step 1 Connect airline to hand control (fig1).
- Step 2 Check that platform is fully lowered and that the base is in “Release Brake Lock and free to roll. Ground clearance between your concrete floor and Cartar base only needs to be minimal.
- Step 3 Roll your Glidemaster under vehicle. It is always preferred to enter underside of vehicle from front to rear with a weight ratio of 3:2. If vehicle is extremely low, use 2 x Cartar ramps.
- Step 4 Lower base to BRAKE LOCK position before proceeding to raise your vehicle
- Step 5 Place your rubber pads in their correct position. If uncertain about correct correct lifting points, refer to owner’s manual.
- Step 6 Check that all persons and objects are clear for a perimeter of 3 meters around your vehicle.
- Step 7 On hand control, move slide to PLATFORM (fig 2)
- Step 8 On hand control push down POWER (fig 3)
- Step 9 Your Glidemaster needs your total attention as your vehicle starts to Rise.
- Step 10 Once Vehicle is at desired height , move slide to WHEELS.
- Step 11 Your Glidemaster is now ready to be released from BRAKE LOCK position and be moved. When ever there is no need to move your vehicle and Glidemaster , always return to the safe position of BRAKE LOCK.
- Step 12 Once Glidemaster is in BRAKE LOCK position , you can disconnect your airline



10.1 Safety Inspection

Regular Safety Inspection is required to guarantee the operational Safety of your Cartar Lift.

IT SHOULD BE PERFORMED:

Before starting up the Lifting platform for the first time by the manufacturer.
Read carefully the chapter “**Operation and Safety Inspection**”.

After the first commissioning, check at regular intervals in accordance with your Plant Health and Safety regulations.

The use of which can be found under the chapter “**Regular Safety Check**”.

Document the condition of your Cartar Lift in a separate copy and attach it to the operating instructions and inspection Log.



Regular safety checks must be performed by a suitably -trained Person. It is advisable to also implement maintenance at the same time.

10.2 Regular Safety Checks

Inspection Step	OK	not ok	concern	Remarks
Nameplate				
Sign with Lifting capacity				
Sign Max Load				
Operating Instructions				
Lift & Lower Identification				
Secure fit of all body work				
Secure fit of Scissor Pins				
Condition of all pneumatic lines				
Hyd Pressure relief setting				
Functionality of Safety System				
Functionality of Power Pac				
Condition of all Hyd Hoses				
Condition of Rubber pads				
Condition of all id plates				
Functionality of Hand Control				
Performance of Air Motor				
Condition of Air Breather				
Condition of Wheels				

Inspection Date	Inspection Report
	Start-up not permitted; verification required
	Start-up possible, faults to be addressed
	No Faults, start-up possible immediately

Safety Inspection performed on serial no.

Name of Qualified Inspector

Machine signed off

11.1 Maintenance

Maintenance work should be carried out at the specified maintenance intervals and only by qualified persons.

Neither water nor flammable liquids may be used during the cleaning process

To ensure durability and continuous operation of your Cartar Lift, the following points should be observed :



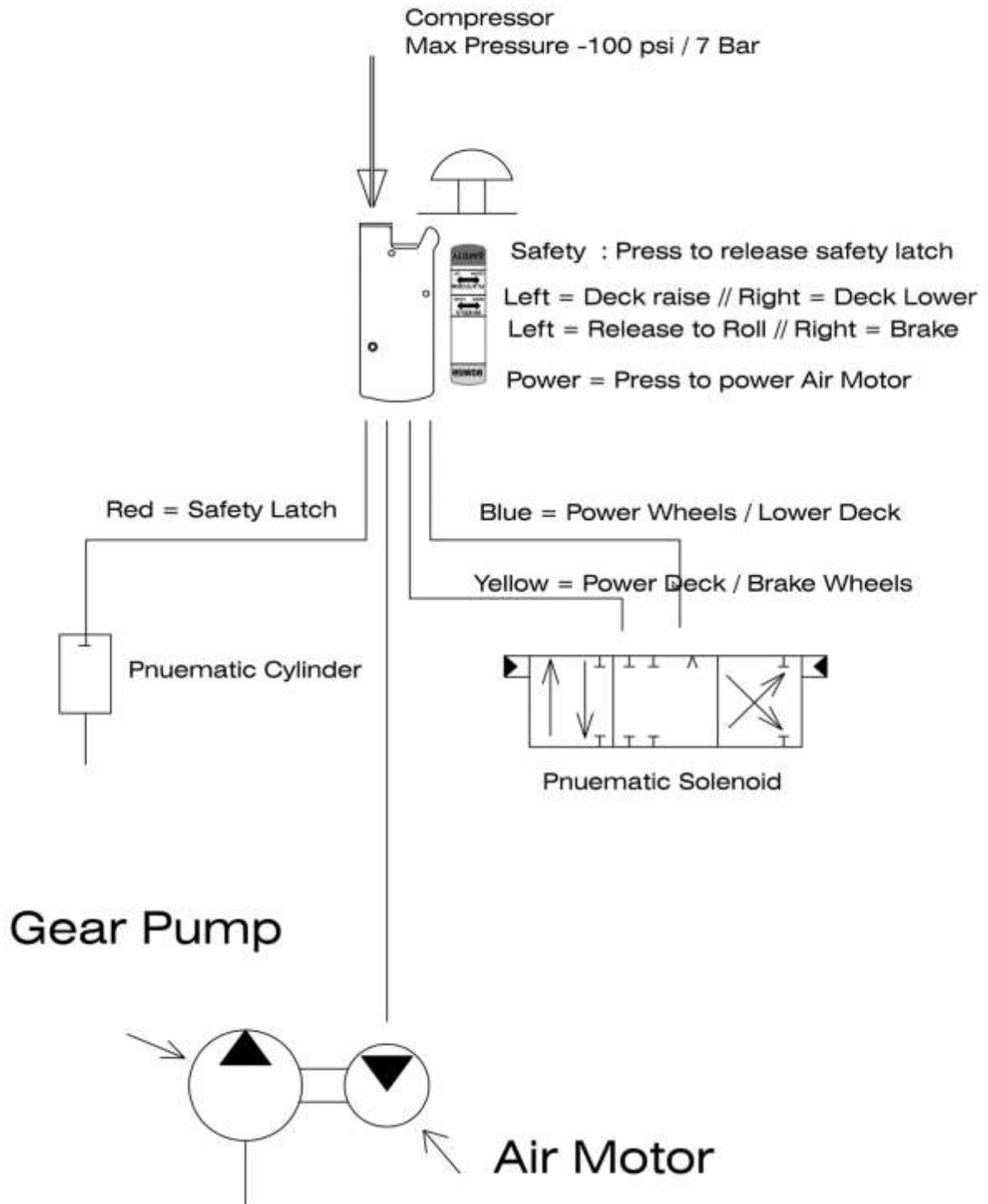
- Only Spare parts from the original manufacturer and suitable tools may be Used.
- Regular Maintenance intervals must be observed.
- For all maintenance work not outlined or explained in this instruction Manual, contact your agent or the manufacturers Customer Service.

Only perform maintenance when the lift achieves Max Lift (Un Loaded) , the Lift platform is braced with service supports and the compressor supply is disabled.

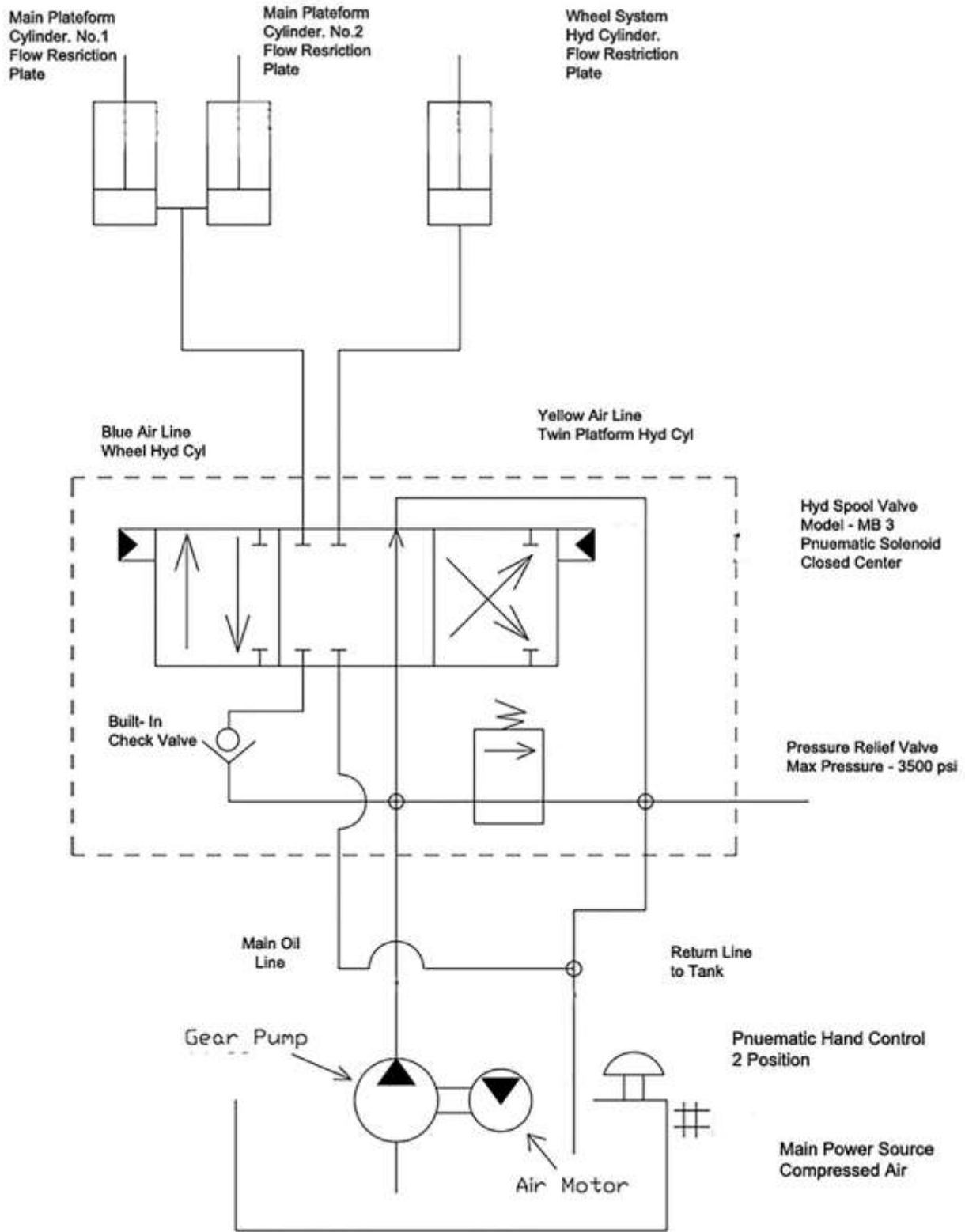
Maintenance Interval	Points to follow	Comments
Monthly	All moveable parts such as Pivot bolts, sliding pads and sliding surfaces should be checked for ware & tear, cleaned and lubricated. Inspect safety system for air and Oil leaks. Check Scissor Arm rollers for ware & tear. Check for braiding on the hand control lines.	Only use lubricants that contain. No adhesive- repelling substances in the area to be lubricated. Only suitable care and cleaning agents are to be used on rubber surfaces
Yearly	Regular safety check in accordance with Government and Insurance requirements	
Replace Cartridge Valve	After every 2 years of operation	
Every 5 years of Operation	Replace all hose sets. Both Pneumatic and Hydraulic. Replace oil	

11.2 Pneumatic Schematics

Pneumatic Schematics



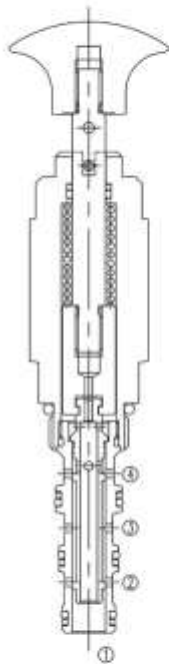
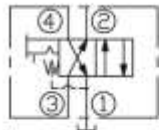
11.3 HYDRAULIC SCHEMATICS



11.4 Cartridge Valve Specifications

Power Pac Valve

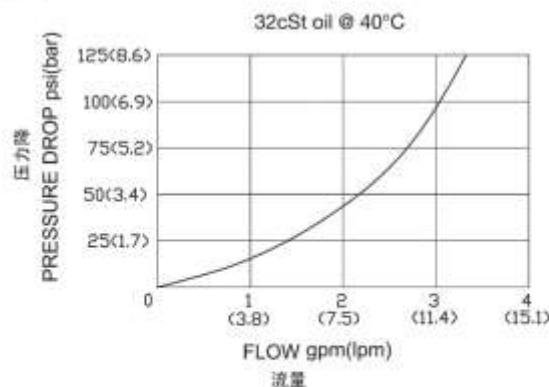
Keta Manifold Cartridge Valve - LMP-08-4-L



技术参数 SPECIFICATIONS

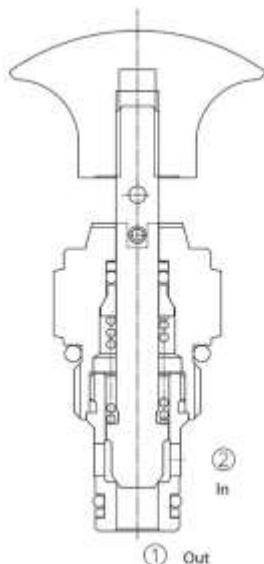
工作压力(Operating pressure):	207bar
油口②、③和④(On②,③and④):	240bar
油口①最大压力(On①Max.):	最大为14bar
流量(Flow):	See PRESSURE DROP VS.FLOW graph.
内泄漏(Internal Leakage):	82 cc/min.(毫升/分) max.
温度(Temperature):	-40°F to +250°F(-40°C to +120°C)
过滤(Filtration):	See page (参见) N-1
油液(Fluids):	Mineral-based fluids with viscosities of 7.4 to 420 cSt.(矿物油粘度)
插孔(Cavity):	08-4, See page M-1
阀块材料(Body Material):	6061-T6 aluminum alloy rated to 207bar, Steel & Ductile iron rated to 350bar 6061-T6铝,允许使用最大压力207bar 钢和球铁允许使用最大压力350bar

压力 - 流量曲线 PRESSURE DROP VS.FLOW



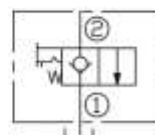
Keta Safety Cartridge Valve - LMP-08 - L

Safety Valve



技术参数 SPECIFICATIONS

工作压力(Operating pressure):	210bar
流量(Flow):	See PRESSURE DROP VS.FLOW graph.
内泄漏(Internal Leakage):	5 drops/min(滴/分). max. at 210bar
温度(Temperature):	-40°F to +250°F(-40°C to +120°C)
过滤(Filtration):	See page (参见) N-1
油液(Fluids):	Mineral-based fluids with viscosities of 7.4 to 420 cSt.(矿物油粘度)
插孔(Cavity):	08-2, See page M-1
阀块材料(Body Material):	6061-T6 aluminum alloy rated to 207bar, Steel & Ductile iron rated to 350bar 6061-T6铝,允许使用最大压力207bar 钢和球铁允许使用最大压力350bar



Power Box	C100-102	3/8 BSP Brass BSLM-03	Filler / Breather
Power Box	C100-103	Air Line Assembly	3 Airlines in Black Sheath x 2.5 mtrs complete Ass
Power Box	C100-104	Air Motor	Complete Ass, Muffler and 2 x 1/4 bsp elbows
Power Box	C100-105	Gear Pump	Group .0 .5 cc Clockwise
Power Box	C100-106	Valve	Keta Cartridge Valve LMP-08-4-L
Power Box	C100-107	Muffler	Hot Dog Muffler - 41 OD B & S MUF 1851 (replaces 89966)
Power Box	C100-109	Straight male to male	1/4 bspt Male to 1/4 bspp O ring Male - Manifold to Wheel Hyd Cyl
Power Box	C100-110	Hyd Hose	Manifold to Small Cylinder - Cut Length -480 mm
Power Box	C100-111	Hyd Hose	Manifold to Rear Safety - Cut Length - 1275 mm
Power Box	C100-112	Male to Male Elbow	1/4 bspp Male to 9/16 UNO O Ring Male Elbow. - Small Cylinder
Power Box	C100-113	Manifold Block Power Pac	Manifold Valve block - less Keta valve and gear Pump, Air Motor
Safety	C100-201	Straight male to male	1/4 bspt Male to 3/4 UNO o Male - Hyd Cylinders
Safety	C100-202	Elbow Male to Male	1/4 bspt Male to 1/4 BSPP O ring Male - Manifold and safety system rear
Safety	C100-203	Male "T"	1/4 BSPT Male T - Safety joiner at rear
Safety	C100-204	Straight Male to swivel female	1/4 BSPP O Ring Male to 1/4 BSPT swivel Female - Safety manifold blocks
Safety	C100-205	Hyd Hose	"T" to Hyd Cylinders - Cut Length - 160 mm
Safety	C100-207	Cartridge Valve	Keta LMP-08-L
Safety	C100-208	Pneumatic Y Joiner	Pneumatic 4 mm Y hose joiner
Safety	C100-209	Pneumatic Swivel elbow	1/8th male swivel Elbow to 4 mm Hose - Pneumatic Cylinders
Safety	C100-210	Cylinder	Pneumatic Cylinder 25 mm Stroke.
Wheel Ass	C100-304	Wheel	Cast Nylon Black 105 Diameter
Wheel Ass	C100-305	Wheel Bearing	Sealed Bearing- 6204 VVCH 47x14x20
Wheel Ass	C100-306	Side Fork Bearings	Sealed Bearing- 6204 VVCH 47x14x20
Wheel Ass	C100-307	Bearing Retainers	C/S Socket Head M12 x 30 zinc Plated
Wheel Ass	C100-309	Top Plate Bolts	C/S Socket Head M10 x 25 zinc plated
Wheel Ass	C100-310	Top Plate Bearings	6200 VVCH 30 x 10 x 9
Body	C100-411	Platform	Orange Top Platform
Body	C100-412	Arms	Zinc Plated swing Arms
Body	C100-413	Pins	Swing Arm Retaining Pins with Circlips
Body	C100-414	Plates	Support Plates for the Lower Arm Bolts 6 mm with 16 mm hole
Body	C100-415	Rod	Mobile Tow Handle
Body	C100-416	Grips	Mobile Tow Handle Rubber Grips
Body	C100-417	Tube Joiners	Tubes that have the bolt go through to connect the l/h & r/h Tubes
Body	C100-418	Inner 20 mm Rods	20 mm Long Rods that slide inside the Wheel Tubes. Need to be machined
Body	C100-419	Label Set	Complete Label set for Glidemaster
Cylinders	C100-500	Hydraulic Cylinder	Small Cylinder that powers wheel System
Cylinders	C100-501	Hydraulic Cylinders	Main Hydraulic Cylinders
Cylinders	C100-502	Brass Plate	Flow restrictor Brass Plates - hole 1/64th
Cylinders	C100-503	Seal Kit	Hydraulic Seal Sets for Cylinders
Hand Control	C100-600	Hand Control	Complete Hand control Assembly including Olives
Chain	C100-603	Chain	Leaf Chain - 50 cm x BL534
Chain	C100-604	Chain Links	Leaf Chain Joiner Links - chain to Rods and to Tubes

11.6 Troubleshooting

To avoid machine damage or life-threatening injuries whilst resolving faults with your lifting platform, the following points must be observed at all times:

- Only attempt to repair a malfunction if you are qualified to perform such work.
- Protect the Cartar Lift from unintentional restart by disabling the compressed air supply.
- Secure the upper frame in the lift position with a stand or a proper support.
- Also read the chapter “**General Safety Instructions**”.

Possible Problems and their resolution

Malfunction	Source of fault	Remedy
Malfunction while lifting	Drop in Mains Air pressure. Hose lines squashed, bent or damaged. Air Motor “Blow By”. Loss in Hydraulic oil.	Reinstate mains Air pressure to at least 80 psi. Inspect all hose lines and replace if necessary. Check Cartridge valves for blockage and clean. Retighten hoses and replenish oil tank supply.
Malfunction while lowering	Lift Platform is sitting on top of an obstacle. Safety Valve has locked. Malfunction with hand control.	Raise the lift , remove the obstacle and then continue lowering. Check Air pressure to Safety system. Check for blocked air lines between hand control and safety System



If ,despite the above measures, the lifting platform cannot be lifted or lowered, the customer service department must be notified .

Customer Service:

Cartar Industries
9A Dalkeith Drive
Dromana, 3936
Victoria,
Australia
+61 3 59 87 1514
info@cartar.com.au

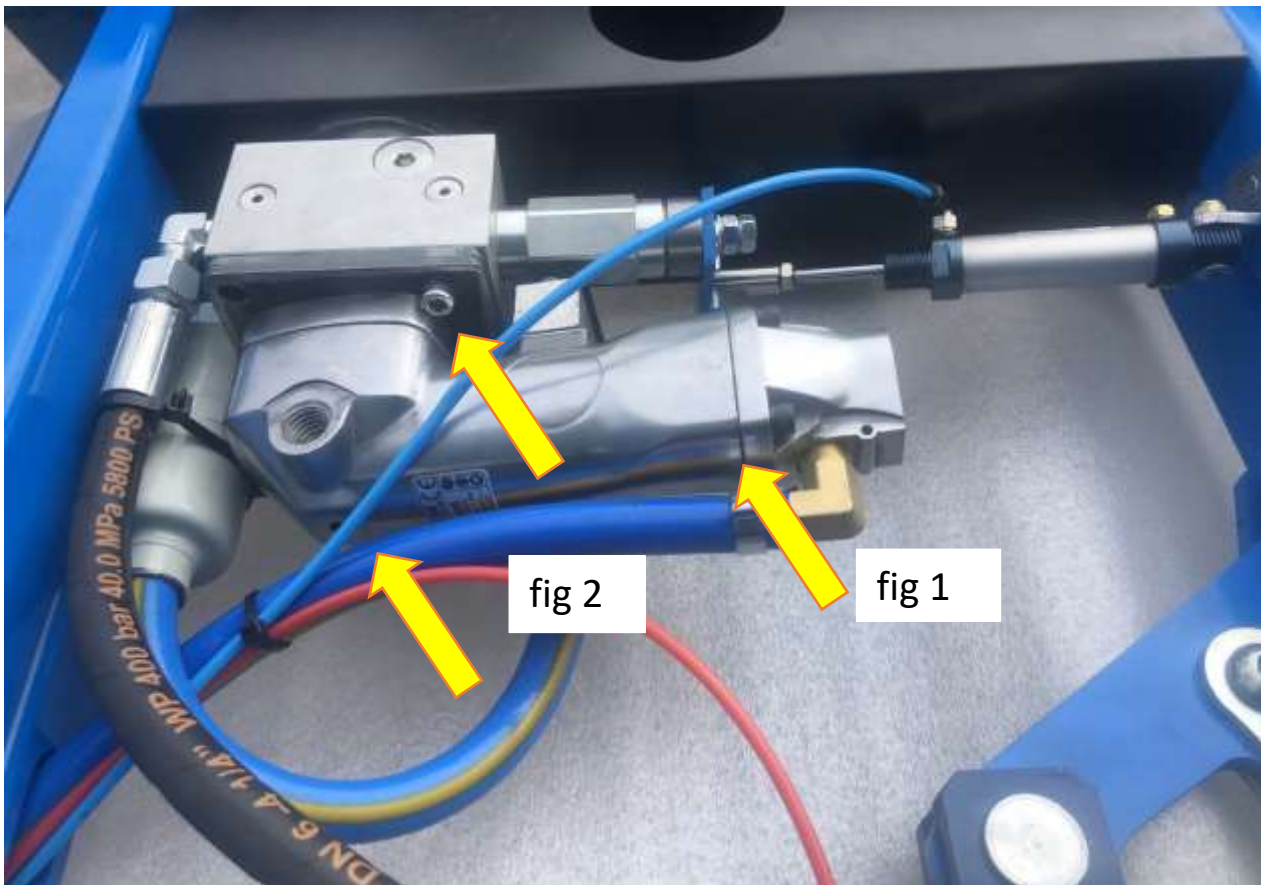


When replacing defective parts, always use only original spare parts from the Manufacturer.

11.7 Fixing Air Motor Blow By

On occasions, you will press the RAISE trigger on your hand control and whilst you hear rushing Air, your motor is not turning. Your air is exhausting through your motor without turning. This is call. "Blow BY" and is a characteristic of Pneumatic motors. A common cause is an air system or a compressor that feeds oil mixed with air over a long period of time which eventually clogs your air motor. When this occurs, follow the steps below.

- Disconnect your airline from the hand control.
- Remove blue Power Pac cover
- Remove mounting bolts (3 x M6 socket head) (fig 2) and remove Air Motor (fig 1)
- Clean and or replace Motor. Free spin motor with air and drops of oil
- Once confident that the motor is now running smoothly, now refit.



11.8 Safety Valve



Cartar Lifts now use the latest in Safety Lock Technology. 40% safer than traditional Lock and Latch systems. One unit per cylinder gives you added strength that even should one fail, one can effectively do the job. Also, with no hoses joining Safety to cylinder, hose burst is no longer an issue

12.1 General Specifications of Glidemaster

• Retracted height:	10.5 cm / 4 inches
• Elevated Height	80cm / 31.5 inches
• Unit Length	205 cm / 80.7 inches
• Unit Width	105 cm / 41.3 inches
• Power Source	Compressed Air
• Maximum Lift Load	2,800 kg / 6,160 lbs
• Shipping Weight	285 kg / 628 lbs
• Oil Grade	Hydraulic 46 Grade
• Oil Volume in Tank	3 ltrs / .8 gallons
• Wheel Turning Circle	360 degrees x 4 wheels
• Leaf Chain	BL 534
• Air Pressure – Min & Max	60 – 100 psi
• Average Air Consumption	13.0 cfm / 6.2 ltrs/sec
• Air Consumption @ 3,500 psi	26.7 cfm / 12.6 ltrs /sec
• Country of Manufacture	AUSTRALIA
• Power Pac and Oil Tank	Completely On-Board
• Installation costs	Zero
• Direction of entry Under Vehicle	Front or Rear, Left or Right
• Period of Warranty	Conditional 2 Years

12.2 Notice about Sliding area of the Scissors.

Due to the design principles of the sliding surfaces, great force is exerted. This force can lead to scoring on the Sliding surfaces. However, the function of the Cartar Lift will not be compromised. The maintenance intervals and instructions outlined in the chapter “**Maintenance**” are to be observed.

12.3 Working on an Elevated Vehicle

Follow the Legal Regulations for the prevention of Industrial accidents. Make sure that no one is in the space under a Lifted Vehicle. Do not rest spare parts or tools on the Lift Platform. Pay attention to the shift of the centre of gravity when installing or dismantling heavy parts to or from a vehicle that is elevated on your Lift. Respect the potential of Weight Shift when installing or dismantling heavy components such as engines, gear boxes or Differentials. Your Lift has the potential to tilt causing injury to person and damage to your vehicle.



CARTAR WARRANTY

WARRANTY PERIOD: 24 Months Conditional

- To ensure that the Cartar Warranty protects the Purchaser, the warranty Registration Form must be signed, detached and mailed to the appointed agent of Cartar Industries within 14 days of the original sale.
- The Cartar Warranty binds the Purchaser and Cartar Industries to the following Terms and Conditions.
- The Warranty period of 24 months is conditional to the following terms - Months 1-12 cover Parts and Labour. Months 13 - 24 cover only Parts.
- This warranty only applies if your Cartar Lift fails to operate correctly due to a faulty component or faulty workmanship on the part of the Manufacturer.
- This warranty only applies to the Cartar Lift that is identified on this registration form.
- It is agreed that Cartar Industries will not be liable for any injuries, losses or consequential damage that may occur because of any defect on this Cartar Lift.
- This warranty will become null and void if this Cartar Lift has been repaired, modified or otherwise interfered with by any person or persons who are not trained and Authorized by Cartar Industries. This will also include any malicious or accidental damage.
- The Purchaser is responsible for the performance and regular inspections and Maintenance as specified in this manual of this Cartar Lift. Untimely and/or improper care and replacement of normal maintenance items will void this warranty. Also use of Non-Genuine Cartar Parts will void this warranty.
- Cartar Industries reserves the right to modify, alter or otherwise improve any part or product.
- By the signing of this warranty, the purchaser acknowledges that he has fully read and completely understands this manual. The purchaser further agrees that no other person will operate this Cartar Lift until they have first read and also completely understand this Manual.