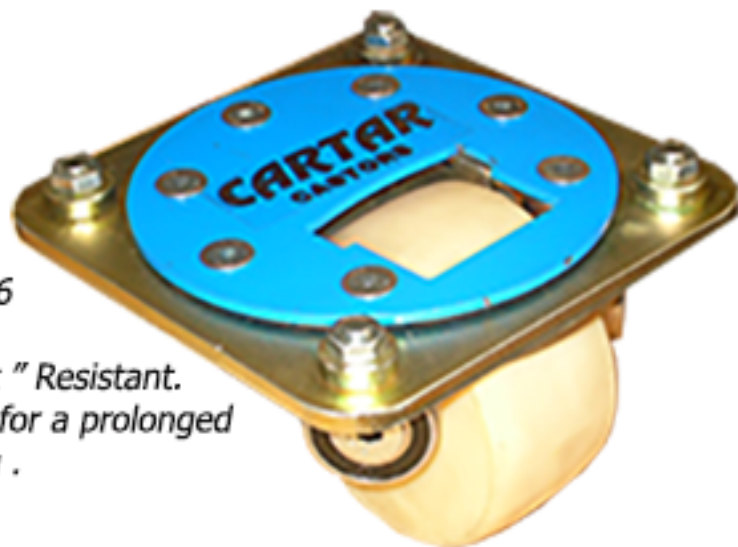




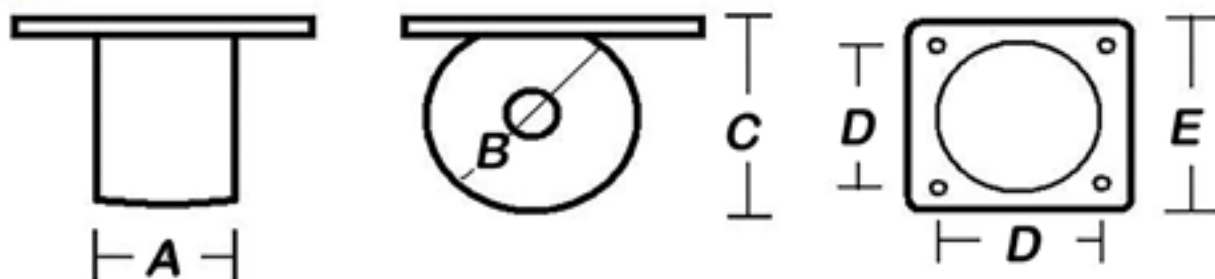
*Glidemaster*  
by  
**CARTAR**  **CE**



All Wheels are highest Grade Cast Nylon P6  
Cartar never use Poly Urethane.  
All Cartar Castors are "Crush and Flat Spot " Resistant.  
All Cartar Castors can sustain heavy loads for a prolonged  
Periods without zero effect of Flat Spotting .

## **Low Profile - Heavy Loads** *multiple applications*

*top mount*



*side mount*



**Zinc Plated Finish -- Wheels constructed of Cast Nylon**

	DIRECTION	A	B	C	D	E	Max Load
<i>top mount</i>	360 degrees	65	100 mm	100 mm	156 mm	216 mm	900 kg
<i>top mount</i>	360 degrees	50	75 mm	75 mm	156 mm	216 mm	600 kg
<i>side mount</i>	360 degrees	65	100 mm	100 mm	...	206 mm	900 kg
<i>side mount</i>	360 degrees	50	75 mm	75 mm	...	206 mm	600 kg

Cartar Castors . 9A Daleith Drv ,Dromana ,Vic 3936 ,Australia . email : [info@cartar.com.au](mailto:info@cartar.com.au)  
tel: +61 3 59 87 1514 . [www.cartarcastors.com](http://www.cartarcastors.com) . AUSTRALIAN MADE