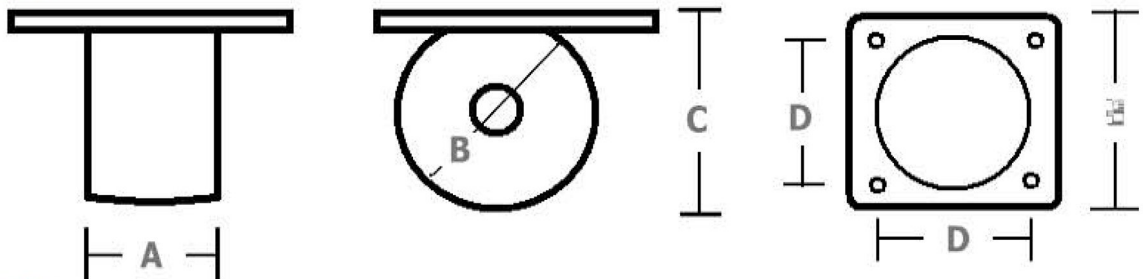


# CARTAR Castors

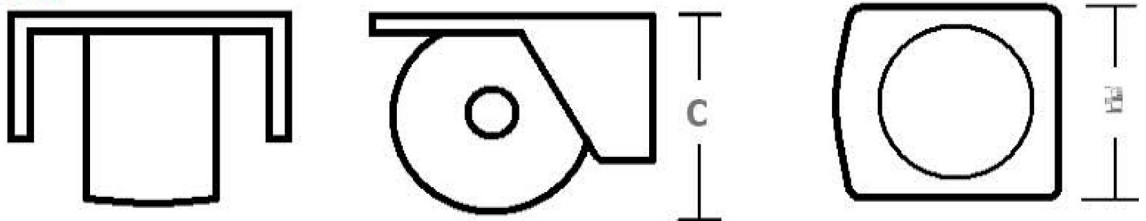


**Low Profile - Heavy Loads**  
**multiple applications - multiple frames**

## top mount



## side mount



**Zinc Plated Finish -- Wheels constructed of Cast Nylon**

	direction	A	B	Ø	C	E	Load
<b>top mount</b>	360 degrees	65 mm	125 mm	130 mm	156 mm	206 mm	1000 kg
<b>top mount</b>	360 degrees	50 mm	85 mm	90 mm			500 kg
<b>side mount</b>	360 degrees	65 mm	125 mm	130 mm	---	206 mm	1000 kg
<b>side mount</b>	360 degrees	50 mm	85 mm	90 mm	---		500 kg

australian made - australian quality

**CARTAR** LIFT & MOVE  
 mobile hoist technology