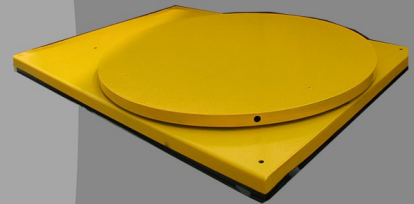


# CARTAR work station



Turn your Cartar Glidemaster or your Econo 100 Lift into a Work Bench .A mobile work Bench. Have total control over your working height with componants up too 2800 kg .Made from heavy duty flat or checker steel plate and powder coated for quality . Your top easily locks into your Cartar Lift and can easily be removed . Excellent cost effective method for production line applications. Talk to Cartar about your projects.



Ground Height - 110 mm  
Length - 1450 x 1050 mm



australian made - australian quality

**CARTAR** LIFT & MOVE  
mobile hoist technology